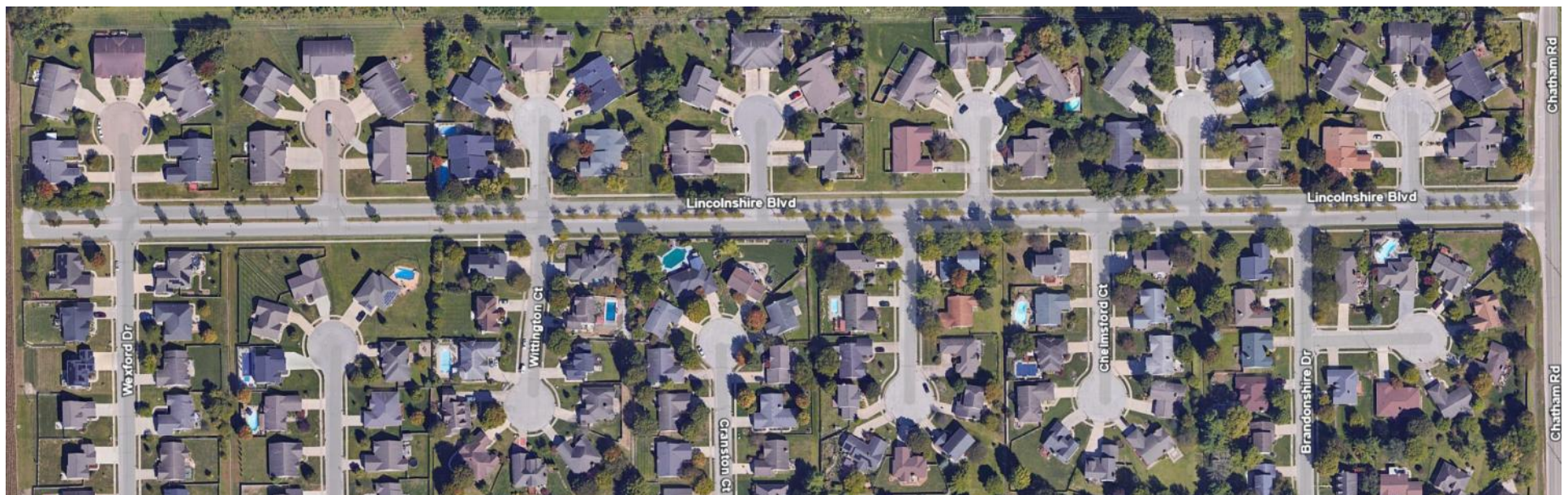
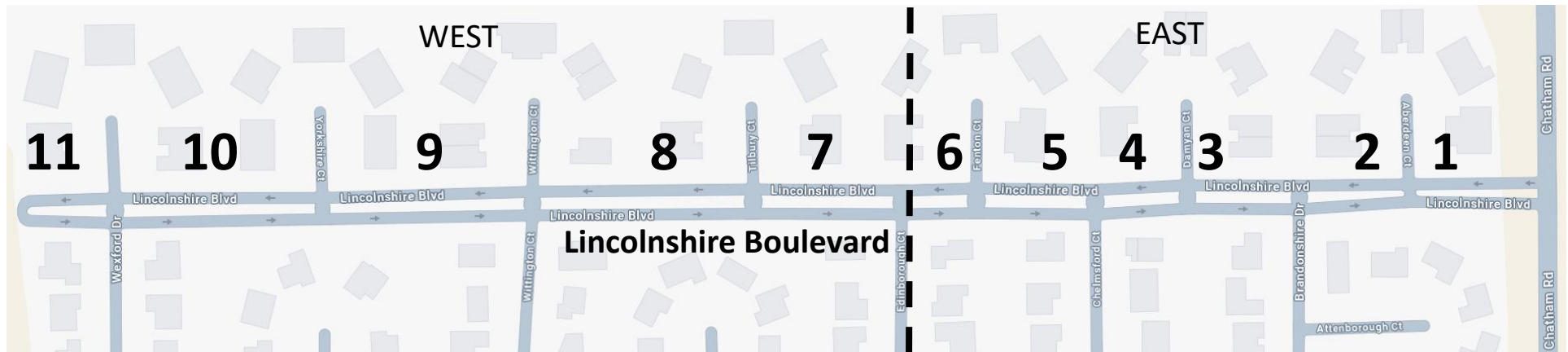


The Lincolnshire Boulevard Tree and Plantings Renewal Project

The Lincolnshire Boulevard Tree and Plantings Renewal Project is a multi-year HOA project to refresh all eleven boulevard islands.

During five or more years, we will renew an east island and a west island, finally completing the renewal project in the center islands of the boulevard.

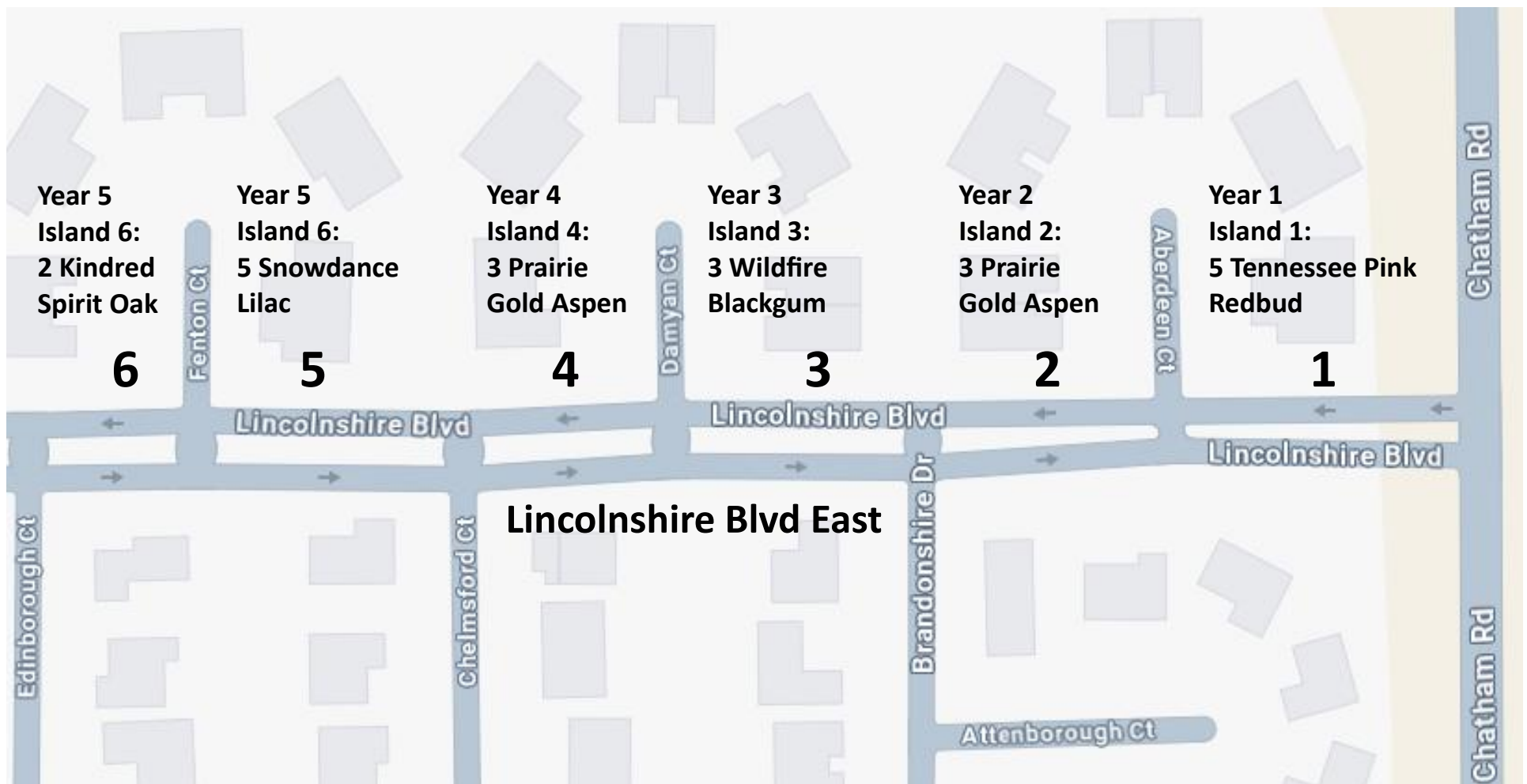
Each spring we will remove dead, invasive species, and unsalvageable trees, maintain plantings and improve soil in preparation for fall tree and ornamental plantings.



A future plan for the boulevard islands should be biodiverse—not all the same species of trees and shrubs—for the long term. If a disease or pest invades one species, trees of different species won't be affected. Biodiversity is natural.

Biodiverse trees, shrubs and ornamental grasses provide seasonal color and winter interest. Spring and summer blooming trees encourage pollinator insects. Trees can help support birds. Fall color trees will enliven the landscape.

Biodiversity isn't just trees. Boulevards will be dedicated to supporting pollinator insects and birds with plants native to Illinois. Trees and shrubs will last longer if they are acclimated to our agricultural zone with hot dry summers and cold winters. We will also amend the poor quality of boulevard soil to help ensure success.



Low maintenance costs—Ideally, trees and plants should only require spring clean-up and tree trimming every five years. Low growing, draught tolerant trees suited to our agricultural zone are our first choice. An especially showy specimen tree or shrub can be inviting at the head of the entrance.

Trees and plantings should not reach beyond the width of the islands. They must not obstruct motorists' view as outlined by Public Works.

Our project goals are:

- to create an aesthetically pleasing focal point of the neighborhood with bio-diverse, hardy, acclimated trees and plantings that are appropriate for the space and require little maintenance.
 - to include plants and trees with seasonal interest for our neighborhood.
 - to provide habitat for birds, pollinator insects and to support Monarch butterflies.
 - to respond to climate change by helping to shade pavement with trees that naturally exchange carbon dioxide for oxygen.
- to slow traffic with interesting shapes and sizes of plantings. Mature trees narrow the visual focus of drivers. When a street looks like a highway drivers treat it as a highway.
 - to quiet the neighborhood. Trees baffle noise from Chatham Road, I 72 and the railroad that boarder the neighborhood.
 - to contract small local businesses to provide labor and plant materials.
 - to partner with organizations and public resources that will support our goals to provide pollinator habitat and provide expertise, grants for plantings, etc.

